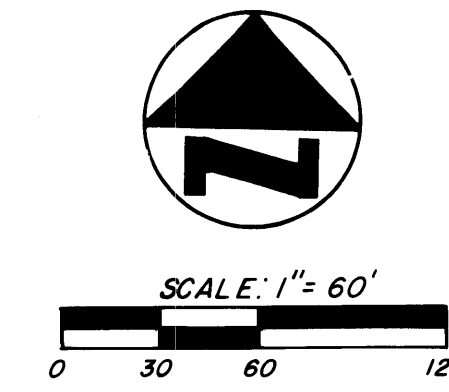


A PLAT OF
HOLLY CREEK, SUB-PHASE "B-4"
 AND A PORTION OF SUB-PHASE B-1 (INFRASTRUCTURE)
 BEING A PORTION OF SECTION 21
 TOWNSHIP 37 SOUTH, RANGE 41 EAST, MARTIN COUNTY, FLORIDA



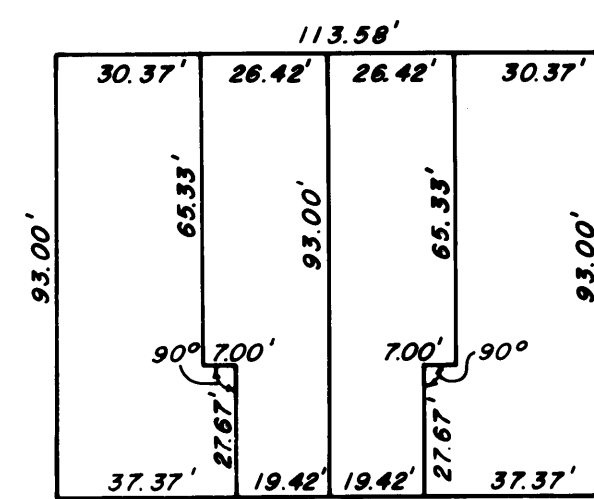
I, LOUISE V. ISAACS,
 CLERK OF THE CIRCUIT
 COURT OF MARTIN COUNTY,
 FLORIDA, HEREBY CERTIFY
 THAT THIS PLAT WAS FILED
 FOR RECORD IN PLAT
 BOOK 10, PAGE 34,
 MARTIN COUNTY, FLORIDA,
 PUBLIC RECORDS, THIS
 DAY OF
October, 1986,
Maisha Stiller, CLERK
 CIRCUIT COURT
 MARTIN COUNTY, FLORIDA
 BY
 DEPUTY CLERK
 FILE NO.

OCTOBER, 1986

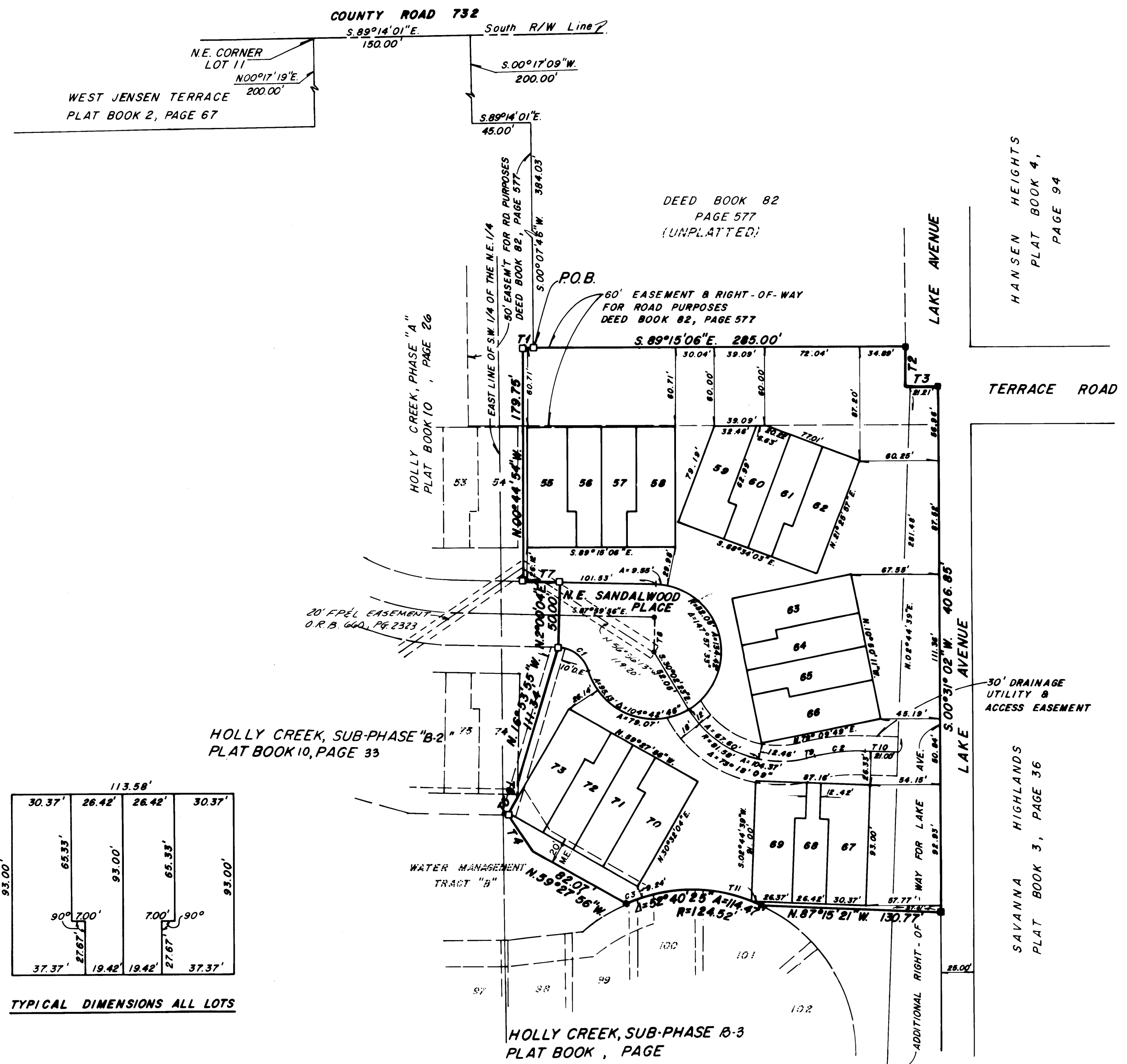
SHEET 3 OF 3

LABEL	BEARINGS	DISTANCES
T1	S 89°15'06" E	8.16'
T2	S 00°31'03" W	30.00'
T3	S 89°15'06" E	25.00'
T4	N 32°41'34" W	32.98'
T5	N 22°29'48" E	17.08'
T6	N 02°00'04" E	6.48'
T7	N 87°59'56" W	27.97'
T8	S 02°00'04" W	27.05'
T9	N 76°42'05" E	6.70'
T10	S 87°15'21" E	25.00'
T11	S 60°41'27" E	4.47'

LABEL	RADIUS	CENTRAL ANGLE	ARC LENGTH
C-1	25.00	72°40'10"	31.71'
C-2	140.00	16°02'34"	39.20'
C-3	124.52	05°49'13"	12.65'



TYPICAL DIMENSIONS ALL LOTS



- DENOTES (P.R.M.) PERMANENT REFERENCE MONUMENT, FOUND
- DENOTES (P.R.M.) PERMANENT REFERENCE MONUMENT
- DENOTES (P.C.P.) PERMANENT CONTROL POINT
- D.E. - DENOTES DRAINAGE EASEMENT
- U.E. - DENOTES UTILITY EASEMENT
- M.E. - DENOTES MAINTENANCE EASEMENT

Notes:
 1. Each number tract depicted hereon is a lot.
 2. Bearings of lot lines lying between lot lines designated with bearings are parallel to said designated bearings.

Bearing Base:
 Bearings shown hereon are referenced to the Plat of Pinecrest Lakes Phase II, Plat Book 8, Page 51, Martin County, Florida.

BEARING BASE:
 THE SOUTH RIGHT-OF-WAY LINE OF COUNTY ROAD 732 IS TAKEN AS BEING S 89°14'01" E, AND ALL OTHER BEARINGS ARE RELATIVE THERETO.